



An
Phríomh-Oifig
Staidrimh

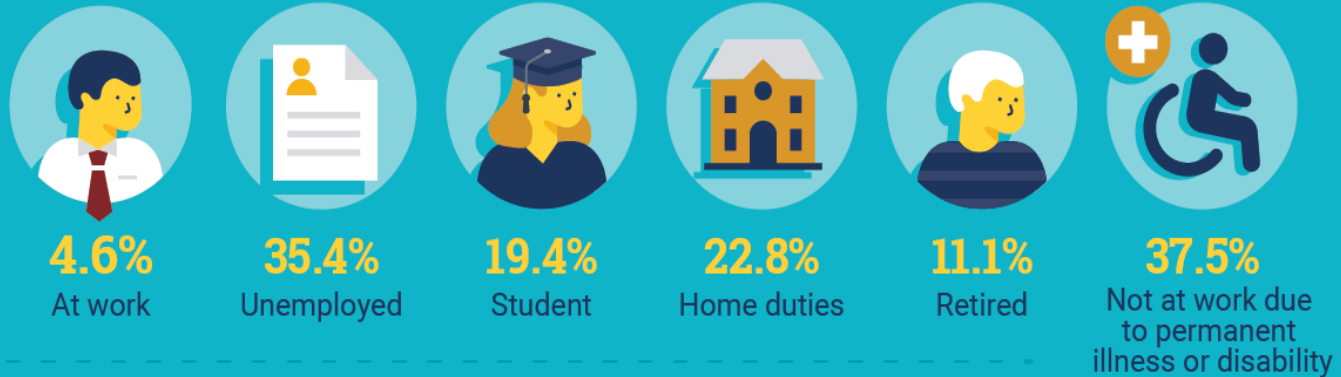
Central
Statistics
Office

Survey on Income and Living Conditions (SILC) 2019

At Risk of Poverty: **12.8%**



At Risk of Poverty Rate by Principal Economic Status



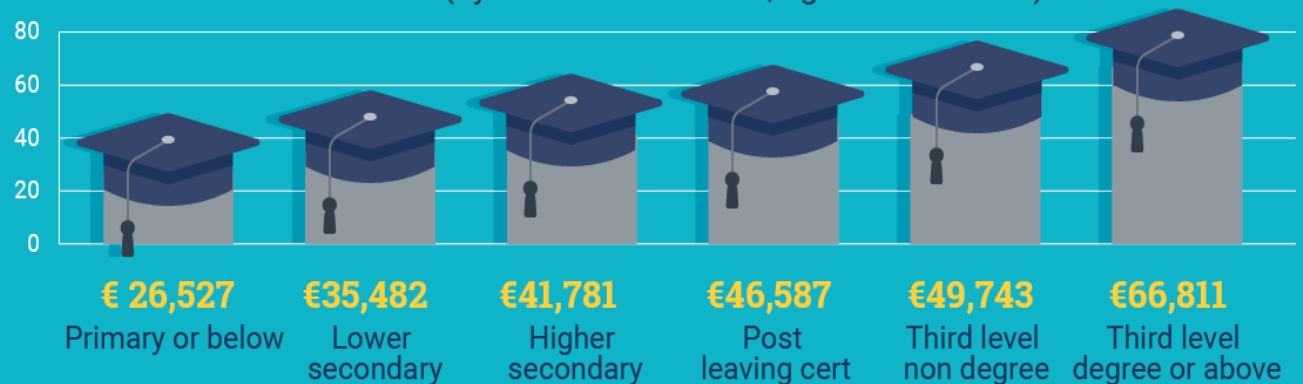
Median
Disposable*
Household
Income

€43,552



* Disposable income
Gross income less tax, social insurance contributions
and inter-household transfers paid

Median Disposable Household Income by Highest Level of Education Attained (by head of household, aged 16 and over)



		At Risk of Poverty			Living in Deprivation			Consistent Poverty		
		2008	2018	2019	2008	2018	2019	2008	2018	2019
		%	%	%	%	%	%	%	%	%
	State	14.4	14.0	12.8	13.8	15.1	17.8	4.2	5.6	5.5
Gender	Males	14.0	13.0	12.6	13.3	14.7	17.4	4.0	5.1	5.4
	Females	14.9	14.9	12.9	14.3	15.6	18.3	4.5	6.2	5.6
Age	0-17 years	18.0	15.9	15.3	18.1	19.7	23.3	6.3	7.7	8.1
	18-64 years	13.5	13.7	12.3	12.8	14.8	17.1	3.9	5.6	5.1
	65 years +		11.4	10.5		8.2	11.2	1.7	1.7	2.3
Economic Status	At work	6.7	5.1	4.6	6.6	9.5	11.4	1.1	1.6	1.3
	Unemployed	23.0	47.3	34.5	37.0	41.6	36.0	9.7	27.6	20.2
	Home Duties	21.7	23.2	22.8	17.5	21.0	24.2	6.9	8.4	9.9
	Not at work due to illness or disability	25.5	47.7	37.5	36.4	36.7	43.3	13.2	21.3	18.1
Household Composition	1 adult aged 65+	11.0	19.7	17.6	11.7	13.8		0.9	3.5	4.1
	1 adult aged <65	25.7	34.0	28.8	20.6	23.9		9.8	13.6	10.0
	1 adult with children aged under 18	36.4	33.5	29.7	35.9	42.7		17.8	19.2	17.1
Urban/rural location	Urban	11.9	13.6	16.2	14.3	16.0	19.8	4.2	5.5	6.5
	Rural	18.7	14.7	12.7	13.0	13.4	13.5	8.3	5.8	3.1
Region	Northern and Western	-	20.1	18.6	-	17.2	19.5	-	7.8	6.9
	Southern	-	15.0	13.3	-	15.2	17.1	-	6.5	5.7
	Eastern and Midlands	-	11.1	10.4	-	14.4	17.7	-	4.2	4.8

The CSO's Survey of Income and Living Conditions 2019 shows a decrease in those at-risk of poverty and increase in material deprivation and that those who experience both of these and are in consistent poverty showed almost no change. In detail the SILC showed that:

- In 2019, 12.8% of the population were living below the poverty line (at risk-of poverty) of €14,723 per annum or €275.72 per week. This is down from 14% in 2018.
- 17.8% experienced deprivation in 2019 because they could not afford at least two of eleven basic essentials. This is up from 15.1% in 2018.
- The consistent poverty rate is 5.5%, not significantly down from 5.6% in 2018. This is over 270,000 people. The Roadmap for Social Inclusion aims to reduce the national consistent poverty rate to 2% or less and to make Ireland one of the most socially inclusive States in the EU by 2025.
- Consistent poverty levels for children for 2019 is 8.1% up from 7.7% in 2018. The Roadmap for social inclusion aims to establish and updated target for reducing child poverty.
- Consistent poverty for some in society remains much higher than for the general population. For example, those who were unemployed are at 20.2%, those not at work due to illness or disability 18.1% and for lone parent families it is 17.1%.
- Poverty levels for those living in rented accommodation, which includes those in Local Authority housing, is much higher than for those who are owner-occupiers.